



COMPANY
PROFILE



NEW DOLPHIN MACHINING SOLUTIONS

Your Partner in Manufacturing

www.newdolphin.in

PARTNERS



New Dolphin Machining Solutions has been built by and large on the credibility earned from our customers and the Hardwork of our Team. Our determination to uphold integrity and sincerity has gained us the invaluable trust of our customers and has in turn motivated us to progress steadily. At NDMS, we systematically invest in the best resources, follow a system of scrupulous financial discipline and strive hard to honor our delivery commitment with utmost quality and reliability. We largely value relationship with all our customers and take pride in being considered as their long term partner in manufacturing. through our

improvement philosophy, we look forward to embracing the advances in technology and staying relevant in this fast transforming world and fulfilling our customer needs.

Mr. V. S. Sridhar, Partner, NDMS



"We wish to be the supplier of choice for precision machined components in the Automotive Sector by employing industry best practices in manufacturing & quality, adopting latest technologies, empowering our employees & suppliers, and focusing on customer and industry needs."

**Mr. G. Chandramohan,
Partner, NDMS**

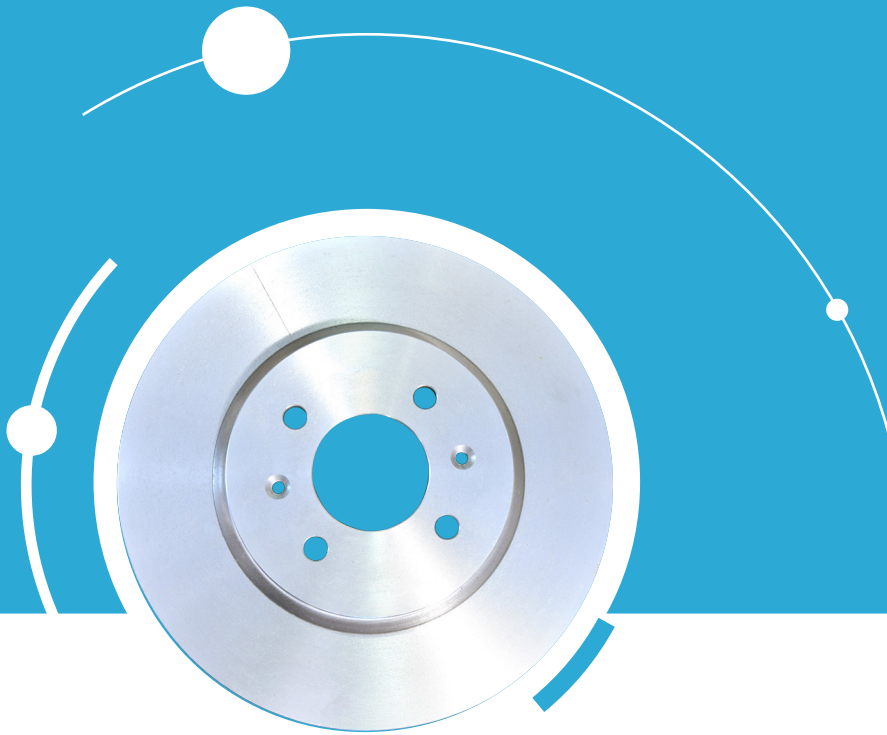


TABLE OF CONTENTS

About Our Company	01
Facilities Snapshot	02
Inspection Facilities	03
Quality Best Practices	04
Certifications	05
Human Resources	06
Our Team	07
Organization Chart	08
Current Products	09
Milestones	11
Awards & Recognitions	12
Customer Base & Geographical Reach	13
Our Products Go Into	14
Photos	15
Future Plans & Goals	17
Industry Testimonials	18

ABOUT OUR COMPANY

New Dolphin Machining Solutions is an industry leader and a well known name in precision machining of critical automobile components. With more than 15 years of expertise in manufacturing and maintaining a quality standard far surpassing our customers' requirements. We are regarded as a reliable partner in manufacturing by our customers.



Since its inception in 2002 and the installation of a “New” leadership in 2012, New Dolphin Machining Solutions has witnessed a steady growth year on year that has pushed the firm forward from being a small size company to a medium size enterprise.

FACILITIES

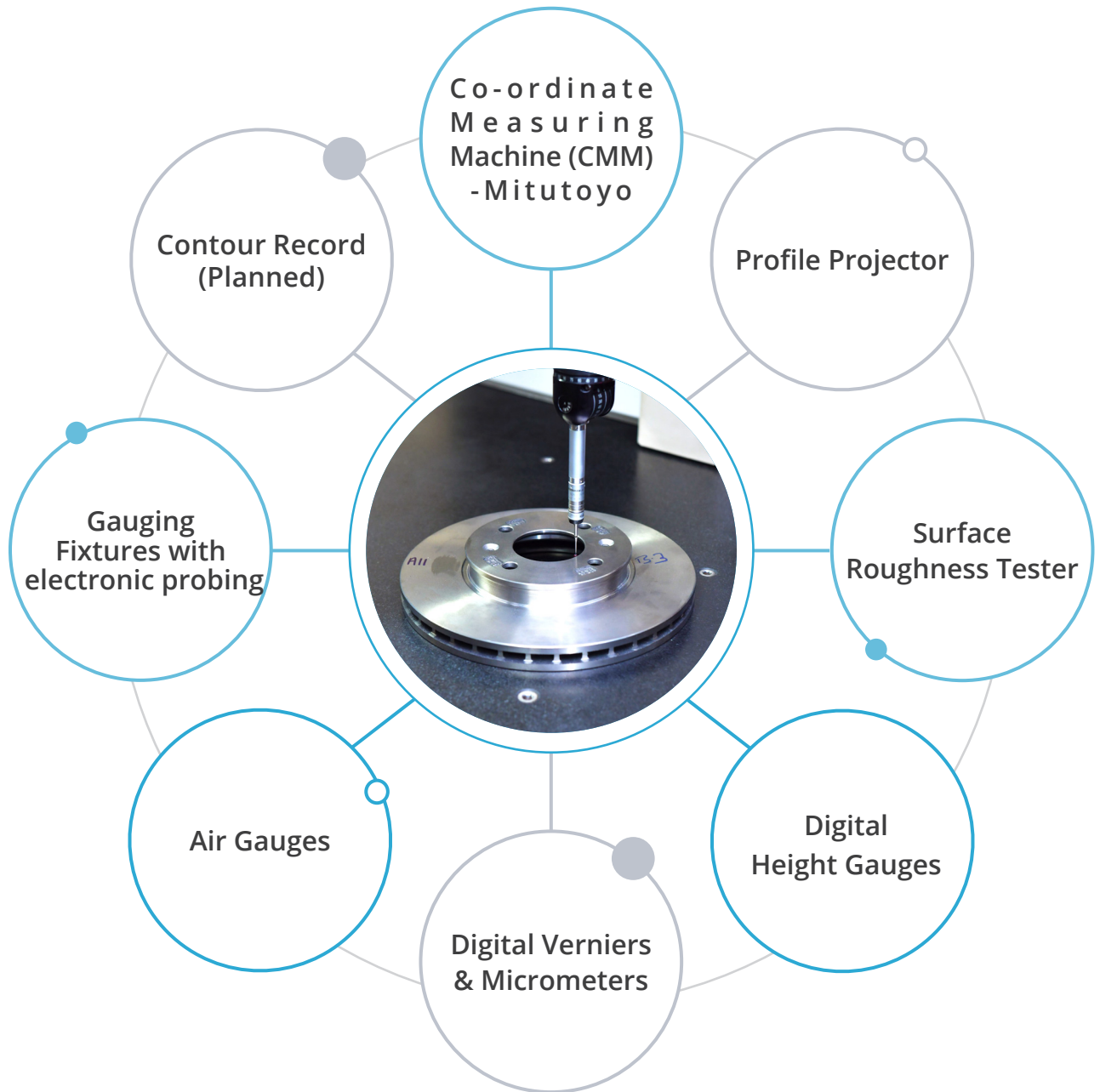
SNAPSHOT



SITUATED AT AMBATTUR INDUSTRIAL ESTATE, CHENNAI, A PREMIUM BUSINESS AND INDUSTRIAL DISTRICT OF CITY. EASILY ACCESSIBLE TO OTHER INDUSTRIAL CENTERS AND FACILITIES AROUND.

WE HAVE TWO STATE-OF-ART MACHINING FACILITIES CATERING TO LEADING OEM AND TIER-1 CUSTOMERS..

INSPECTION FACILITIES



QUALITY BEST PRACTICES

We have always been proactive to adopt the best practices followed in the industry. Some of the best practices followed are:

FIFO

Process – Best Practices

- First In First Out (FIFO)
- Preventive Maintenance of Machines, Tools & Fixtures
- Critical Spares
- PPAP / ISAR
- FMEA
- Work Standard
- Control Plan
- Skill Matrix



FINAL

- Inspection Checksheets
- Setting Approval Report
- Tool History
- Final & Visual Inspection
- Revalidation Reports



ADDITIONAL QUALITY BEST PRACTICES

- Control Charts & SPC
- MSA / Gage R & R
- Dr. Ishikawa's 7 Quality Tools
- 5S
- Mistake Proofing – Poka Yoke
- Continuous Improvement – Kaizen
- Waste/Scrap Reduction

CERTIFICATIONS

IATF 16949 : 2016 Certification by TUV Nord



We are committed to continuously improve each facet of our business operations through implementation of, and compliance to our IATF 16949 : 2016 & ISO 9001 : 2015 Quality Management System.



ISO 9001 : 2015 Certification by TUV Nord



Machining of Components for Automotive and General Engineering Industries.



100 PPM Certification by Hyundai Motors India

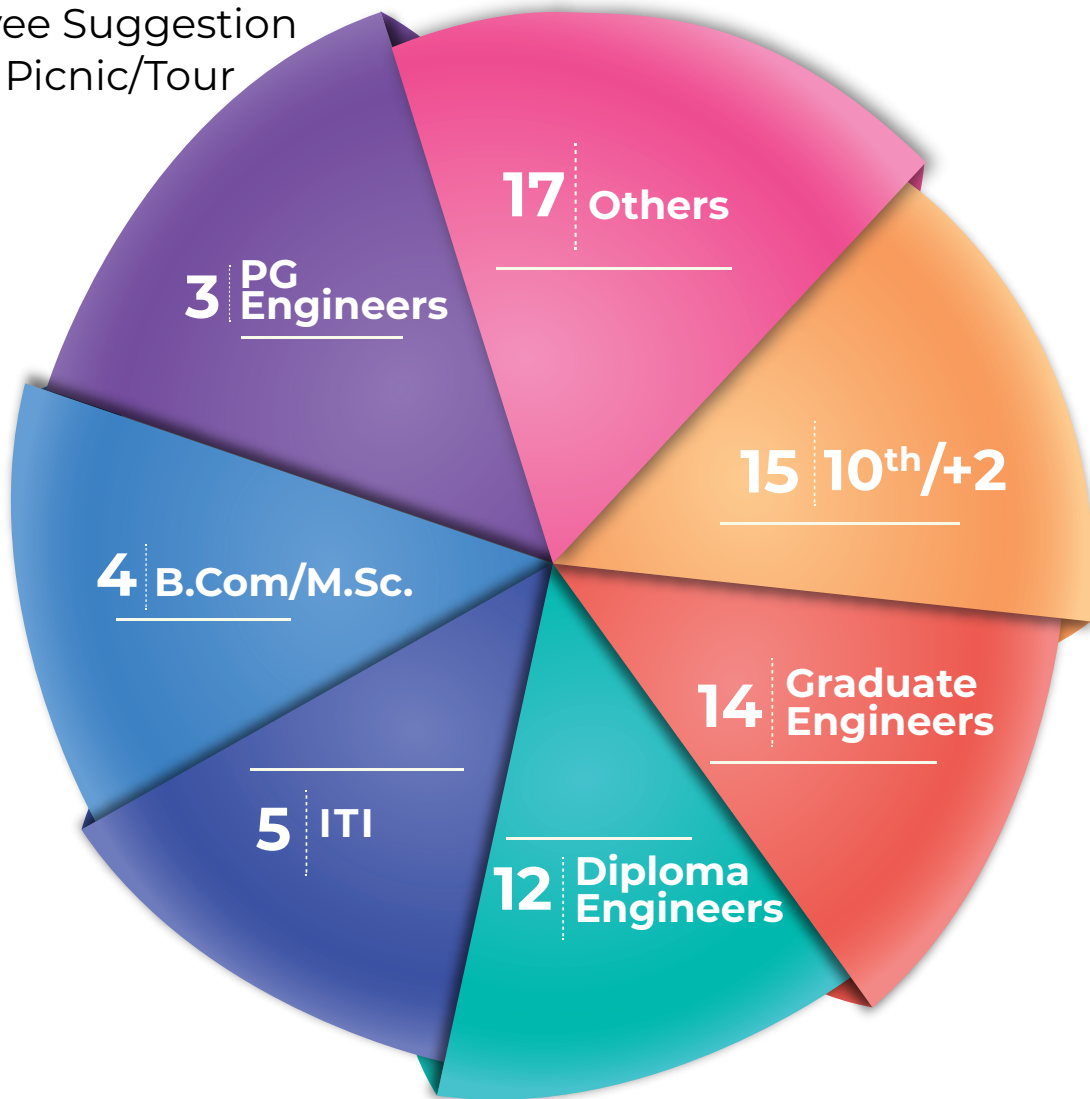
100 PPM certification by Hyundai Motors India (HMI). Recommended as benchmark company by HMI for the process of Machining.



HUMAN RESOURCES

Some of the HR best practices we follow:

- Performance Based Rewards
- Employee Benefits / Loans
- Job Rotation
- Cross Skilling
- Continuous Skill Development
- Employee Suggestion
- Annual Picnic/Tour



LEARNING

We believe in continuous learning leads to overall growth of the employees & organization.

TRAINING

Our employees undergo periodic on-the-job training and External trainings.

EXTERNAL

Some of the external trainings attended by our employees in the past 12 months:

- FMEA
- SPC / MSA
- IATF 16949 : 2016
- 5S

OUR TEAM



Mr. Pratheep Chandramohan
GM & Business Head

15+ years experience in Auto & Non-Auto, General Management, Operations, Manufacturing.



Mr. Prashanth Sridar,
New Product Development Head

9+ years experience in Supply Chain, Manufacturing & E-Commerce.



Mr. V. Muruganandham
(Quality / NPD Manager)
14+ years experience in Quality, NPD and shop floor management

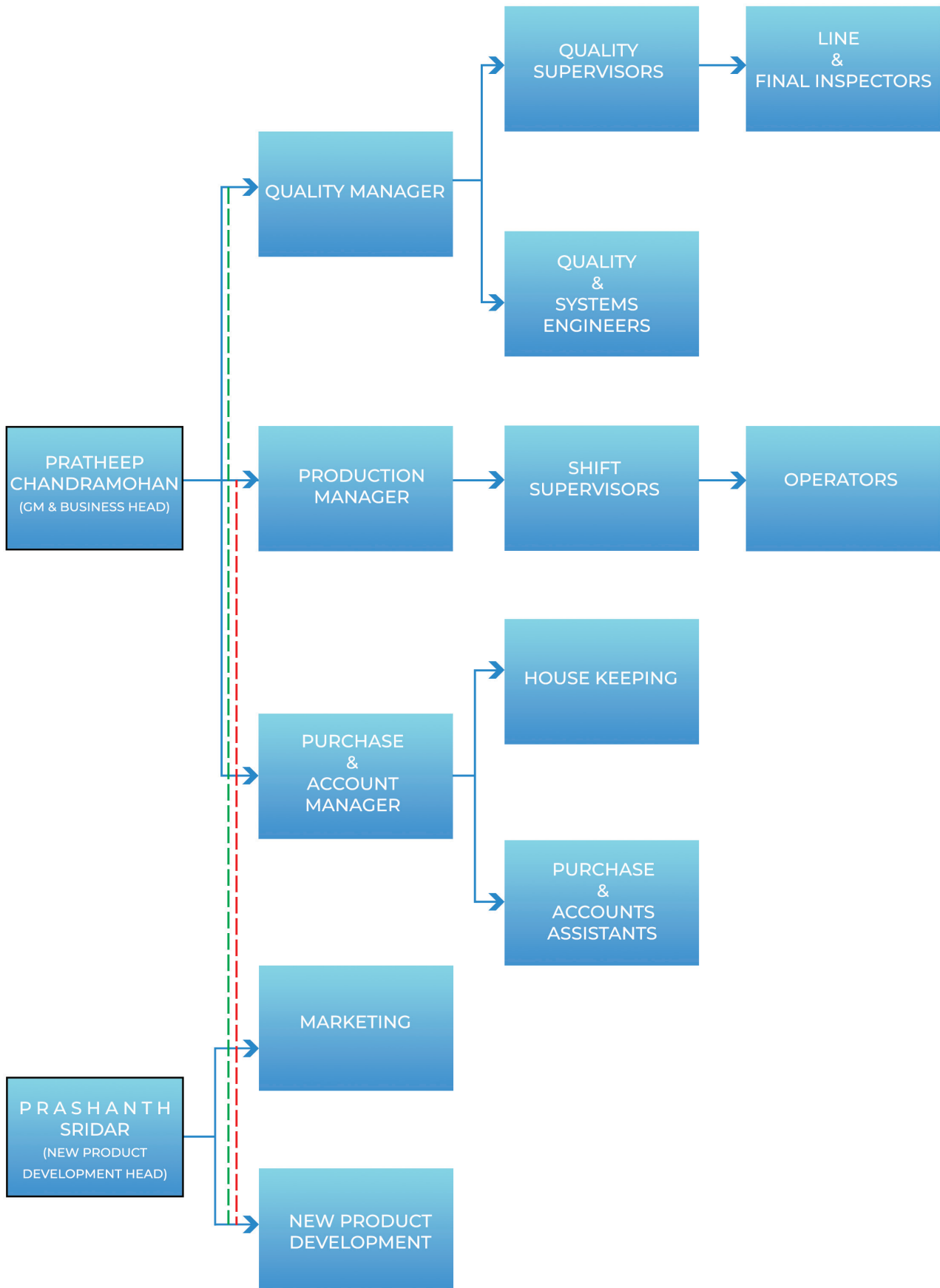


Mr. Y. Jebasingh
(Production Incharge)
13+ years experience in Production & Maintenance



Mr. T. Balaji
(Systems Engineer)
6+ years experience in Systems Documentation (IATF / ISO)

ORGANIZATION CHART

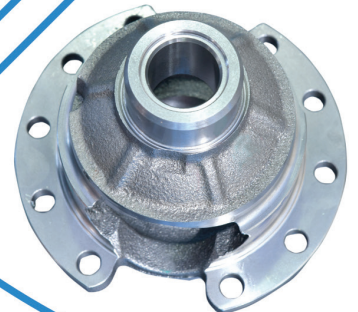
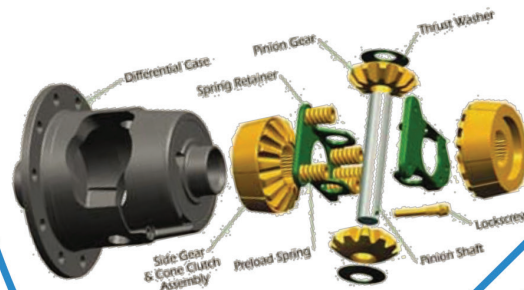
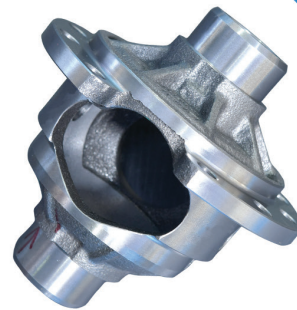
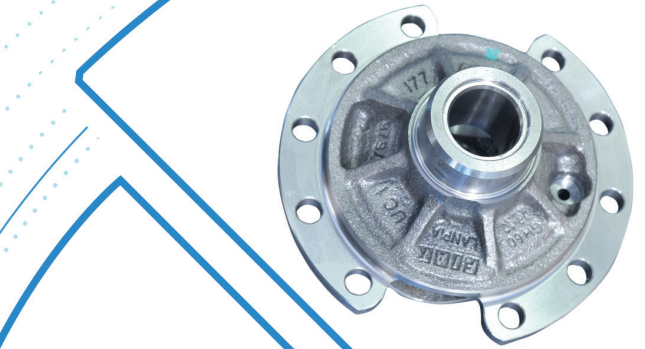


CURRENT

We have capacity to produce 75,000 pcs annually

We are planning to expand our differential case product portfolio to other global OEMs, progressively.

Planning to introduce new swivel head multi-tasking CNC machines to produce differential case in just 2 setups (to be reduced from current 4 setups)



CRITICAL PARAMETERS	TOLERANCE ACHIEVED
Pinion Shaft Hole	16µm
Outer Diameter	16µm
Sphere True Position	100µm
Perpendicularity / Symmetry	50µm

DIFFERENTIAL CASE

PRODUCTS

We have capacity to produce 1,000,000 pcs annually. The end use product are some of the fast moving

Passenger cars, both domestic and globally (End product is exported to 100+ countries).

Our VTL Turning machines are capable of machining jobs upto 400 mm in diameter

CRITICAL PARAMETERS

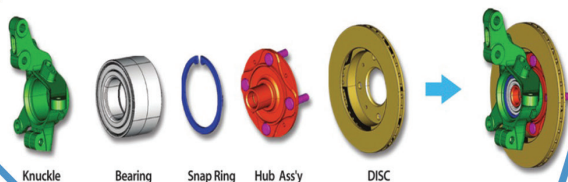
TOLERANCE ACHIEVED

Disc Thickness variation $5\mu\text{m}$

Face Runout $25\mu\text{m}$

Flatness & Paralletism $30\mu\text{m}$

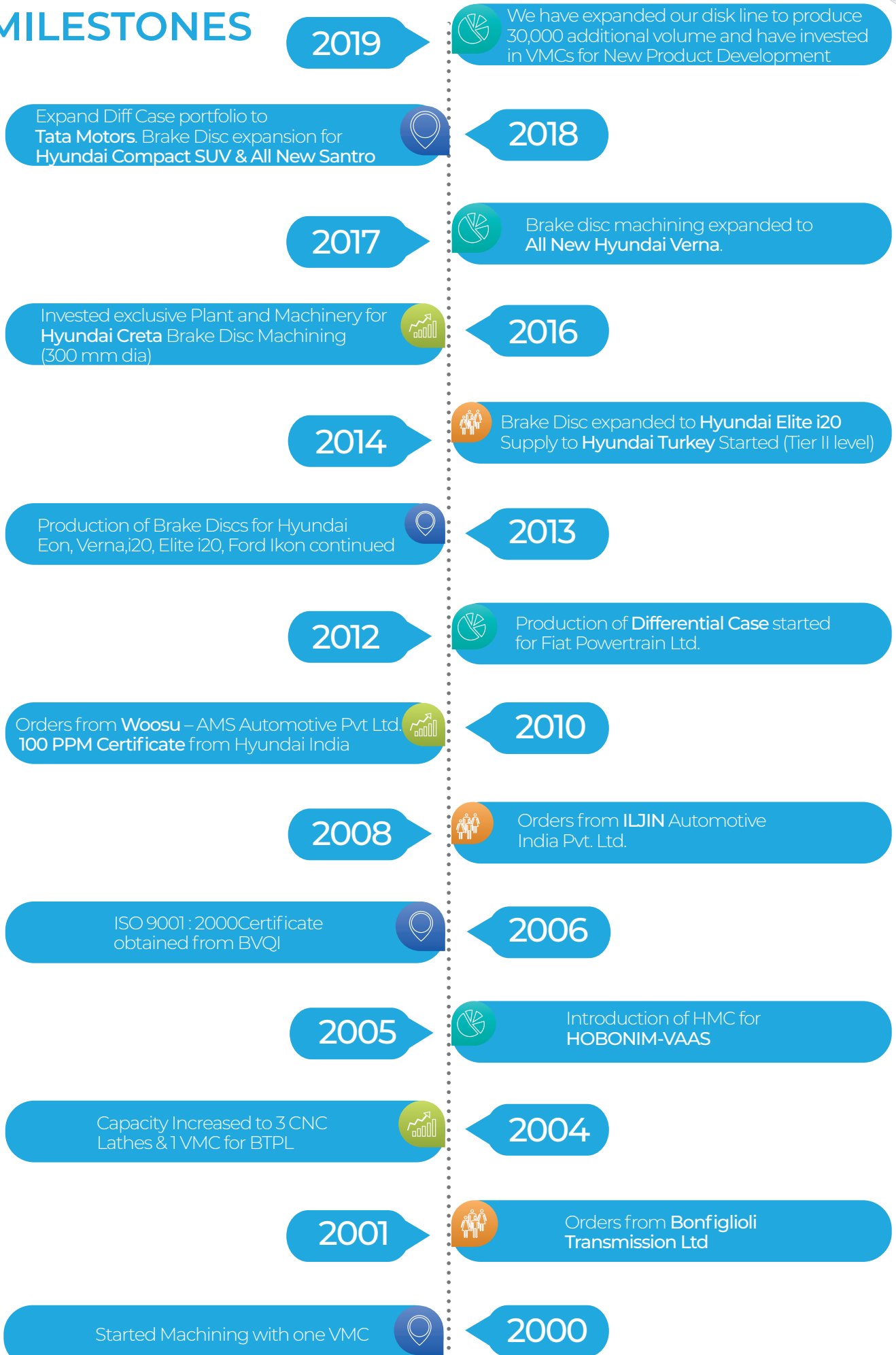
Hub Assembly Bore $40\mu\text{m}$



Front Axle Corner Module Assembly
(Customer End – Illustrative)

BRAKE DISC

MILESTONES



AWARDS & RECOGNITION



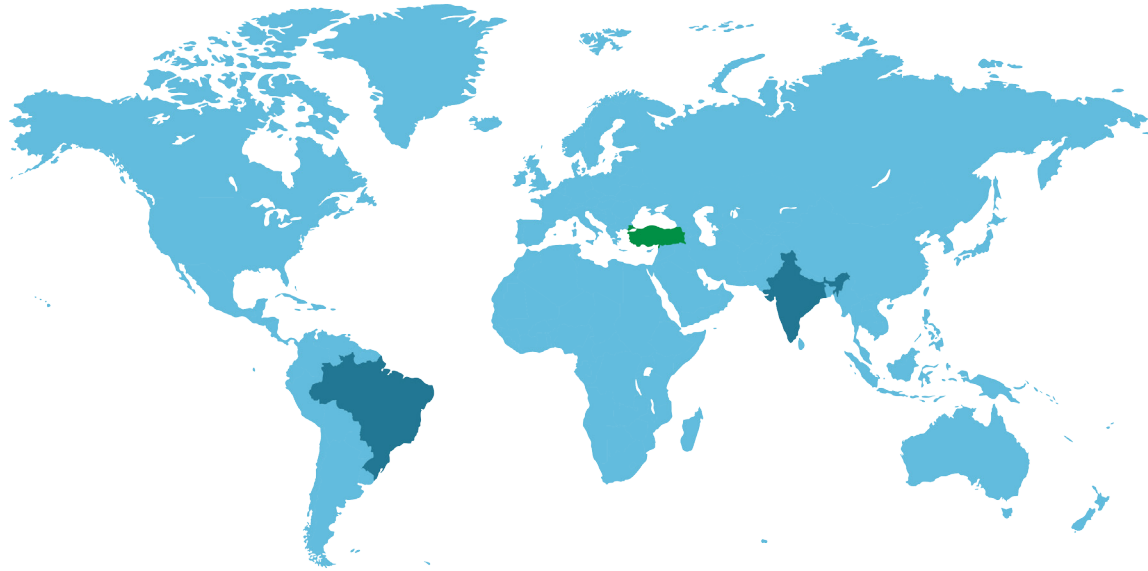
Star Performance Award 2010
by Iljin Automotive India Ltd

100 PPM certification by
Hyundai. Recommended as
benchmark company by HMI
for the process of Machining.

Best supplier award of the year
2012 by Iljin Automotive India
Ltd

Best quality performance of the
year 2012 by Woosu

CUSTOMER BASE & GEOGRAPHIC REACH



HYUNDAI



TATA MOTORS



FIAT CHRYSLER AUTOMOBILES

OUR PRODUCTS GO INTO...

HYUNDAI



i10



ELITE i20



VERNA



EON



SANTRO



CRETA

TATA



ZEST



INDICA VISTA



MANZA

FIAT



PUNTO

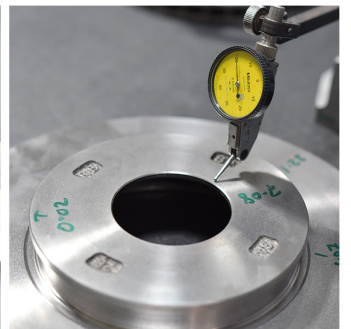
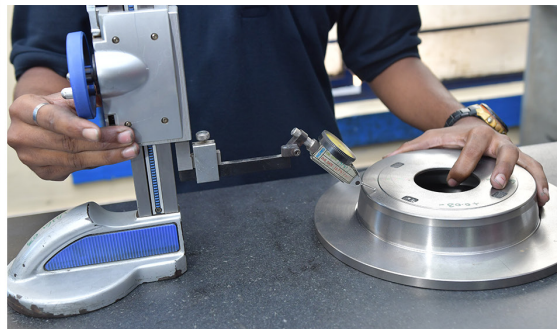
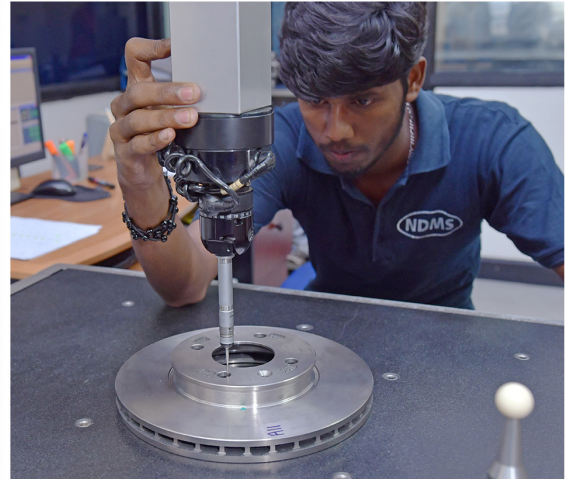


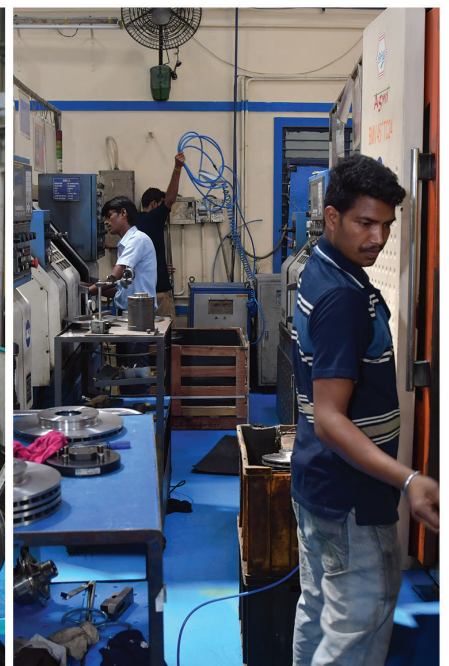
LINEA

FORD



IKON





OUR GOALS

To add a new customer and a new product year on year

To begin supplying auto components for electrical vehicles by March 2020

To become a sub assembly supplier for a Tier-1 customer by 2020

To become Tier-1 supplier to an OEM customer by 2022

To become a automotive product company by 2025

INVESTING IN THE FUTURE

Achieve 20% market share from Tier-1 and OEM customers by Sep 2019

Achieve 40% of revenue share from Differential Case by Mar 2020

Expand Product Portfolio
Knuckles,, Brake Drums,
Shafts, Exhaust Manifolds,
and Allied Components.

NEW PRODUCT DEVELOPMENT

NDMS has specialized in manufacturing automotive components particularly in the Axles, Brakes, Power train and drive train segments. We have now begun to develop new products and diversify our expertise in general engineering and non-automotive sectors. In the near future, we look forward catering to the Electric Vehicle industry as well. If you are looking for a reliable high volume manufacturing partner for your industry, we might be able to help.

INDUSTRY TESTIMONIALS

IC engines are not going to be dead by any stretch of the imagination. If you assume a 10 percent CAGR (a reasonable growth) in the auto industry to the year 2030 and if we assume that EVs will penetrate about 30 percent of the market (domestic), which is quite an aggressive scenario, even then the growth of the IC engines will be 7 percent. So 7 percent growth for the next 12 years is nothing to sneeze at.

The next point that I want to make is the reverse of the first. There are people who still believe that EVs are all talk and therefore let us not take it seriously. In my view, it is not far from reality. The volume (of EV demand in India) so far has not been enough to justify, but we know that a new EV policy is underway.

Dr.Pawan Goenka, MD, M & M, on Electric Cars and future of the IC engines

ACMA data suggests that Indian OEMs will continue to import auto components worth US\$ 35 billion against exports of US\$ 30 billion by 2021. I don't accept that as part of this industry. This needs to change as this will hurt India's competitiveness as a global source of manufacturing. I urge you to push the envelope on Tier 2 and 3 suppliers to localise and continue to reduce costs. This will also build capability.

Anurag Mehrotra, President and MD, Ford India, on the importance of localization

The transition from ICE vehicles to pure electrics will impact the aftermarket segment, although I have my doubts on the changing business model. What is really going to change in this scenario is the absence of the motor (engine). When that is gone, you don't need maintenance, this is very clear. But the tyres will stay just like the brakes, shocks and chassis parts and others. I can give you a new case study of a battery-powered car. They are sometimes heavier than the regular petrol car. This means that the shocks (absorbers) and the chassis parts may face faster wear and tear as compared to the petrol ones.

Helmut Ernst, Senior Vice-President, ZF Aftermarket, ZF Friedrichshafen AG, on the impact of transition to electric on the aftermarket industry.

This year we have adopted 'Auto Component Industry in India – Preparing for the Future' as our theme for the year 2018-19. The auto-component industry in India is today entering a new phase in terms of global exposure and adoption of technology. The priorities for the future would be to put much greater focus on R&D, to help generate intellectual property in India where world class production quality will be a given.

Mr. A. Venkatramani, President ACMA, on the importance of automotive R&D in India and role of Tier

After adopting TQM in November 2012, the results that we were able to achieve were dramatic. By March 2013, our team was surprised to see that the rate of defects and scrap had begun to crash and quality standards had gone up considerably. The results were really remarkable, so much so that in only three months I believed the entire organization must benefit from such best practices.

Arathi Krishna, Managing Director of Sundram Fasteners, first woman to receive the Deming Prize, on the importance of TQ in the automotive industry

"The auto component industry must embrace the digital revolution to stay competitive and relevant. The time has come for the industry to graduate to Industry 4.0 for better predictability and addressing customer requirements. To capitalise on the opportunity, companies will need to shift from their traditional "disconnected" and "analogue" manufacturing methods to connected and digitised ones".

Tata Motors' Thomas Flack said,

It feels amazing to work in such a positive environment where everyone's opinion matters.



We appreciate all your hard work and dedication that has made this team such a success.

LOCATIONS

How to get here:

Chennai International Airport (MAA):

If you are an international or a domestic traveller, you can land directly at the Chennai airport. It has its own Metro Rail stop connecting it to the Chennai Central Railway station and the Chennai Mofussil Bus Terminus (CMBT) by a single ride. Located at a distance of 21 Kms, the best way to reach NDMS however, is by car.

Chennai Central Railway Station (MAS):

You can reach the Chennai Central station from any urban or suburban city in India. It is in close proximity to the Mass Rapid Transit System (MRTS) station and has its own Metro Rail stop, connecting you to most places in Chennai. It is situated at a distance of 18Kms from NDMS.

Nearest Bus stop to NDMS:

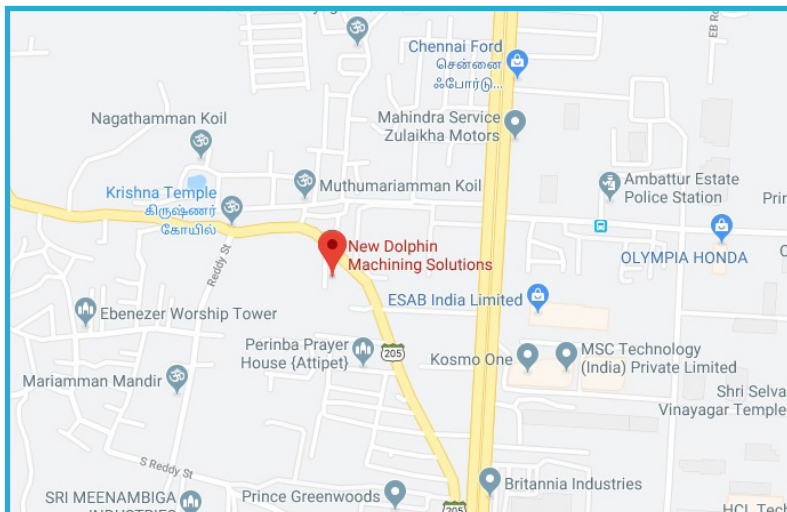
Athipet Junction bus stop. A mere 10 minute walk from our NDMS Unit I office.

Nearest Metro Rail station to NDMS:

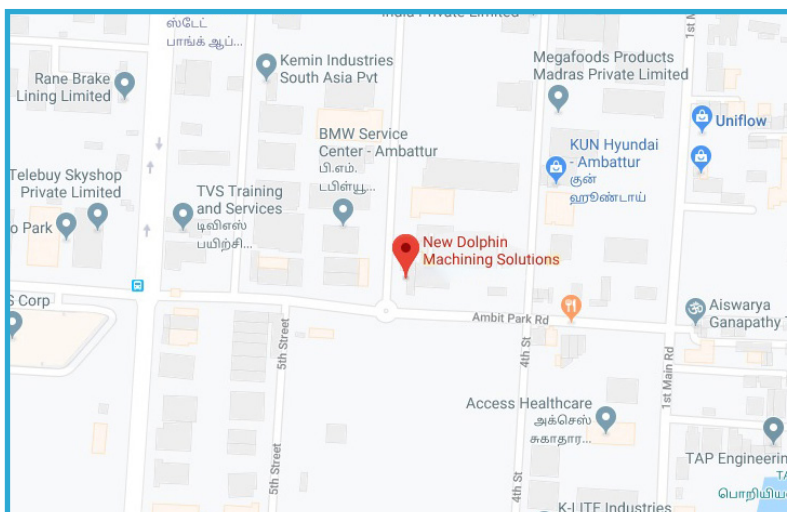
Thirumangalam. However it is a 7km car ride to NDMS from here.

We would be very glad to arrange for a pick up service once you are in Chennai. Or if you decide to reach here by yourself, simply type in "New Dolphin Machining Solutions" on your google maps and get turn by turn navigation till our doorstep.

Unit I: No.8 Brindavan Colony, Vanagaram Road, Athipet, Chennai 600058



Unit 2: B-16, Industrial estate, Ambattur, Chennai - 600058





Landline: 044-26252845

Mobile: +91-91761 26224
+91-99401 40285



Unit 1: No.8 Brindavan Colony,
Vanagaram Road,
Athipet, Chennai 600058

Unit 2: B-16, Industrial estate
Ambattur, Chennai - 600058



E-mail : accounts@newdolpin.in

Web : www.newdolpin.in